

Beside The Sea Bag and Coordinating Pouch

Designed by Janet Goddard www.patchworkpatterns.co.uk
Finished Bag Size 22" x 18" x 5" (56cm x 46cm x 13cm) excluding handles
Finished Zipped Pouch Size 7" x 5" (18cm x 14cm)



makower uk

Beside The Bag and Coordinating Pouch

Designed by Janet Goddard www.patchworkpatterns.co.uk
Finished Bag Size 22" x 18" x 5" (56cm x 46cm x 13cm) excluding handles
Finished Zipped Pouch Size 7" x 5" (18cm x 14cm)

Fabric Requirements:

Fabric	Useage	Design	Amount
Fabric One	Outer bag only or with optional fabric handles	2346/1 Border	70cms / 28" 90cms / 1yd
Fabric Two	Outer Bag Base	2342/B Anchor	25cm / 10"
Fabric Three	Lining and Pouch Strap	2339/B Icon Scatter	75cms / 30"
Fabric Four	Outer Pouch and Tag	2345/B Beach Huts	Fat 1/8 th
Fabric Five	Pouch Lining	2347/BB Chalky Stripe	Fat 1/8 th
Other; 25" (65cm) single sided fusible foam lining (WOF 42in), 8" (20cm) fusible wadding (for pouch and optional handles), two (1") (2.5cm) squares of iron on interfacing			
Notions; One magnetic snap, four metal bag feet, one swivel bolt snap, four metal eyelets, 64" (1.65m) 1/2" (12mm) wide natural jute rope, one 7" (18cm) zip, 4" (10cm) 1/8" wide ribbon			

Notes;

- Read the pattern in full before starting.
- 1/4" seams are used throughout.
- All fabrics quantities are cut width of fabric (WOF) and allow for one way designs.
- If using a border print or one way design note that the width of the bag is 22" so ensure that the pattern of the fabric is correctly orientated.
- Take care when joining pieces from directional prints to ensure pattern is the correct way up.
- Make sure to visit <http://www.makoweruk.com/projects/> to ensure you are working from the most up-to-date version of the pattern.

Cutting Instructions:

Fabric One:

- Two (22 1/2" x 16 1/2") rectangles
- Two (4 x 28 1/2") strips (optional fabric handles)

Fabric Two:

- Two (22 1/2" x 5") strips

Fabric Three:

- Two (22 1/2" x 20 1/2") rectangles
- One (20" x 2") strip

Fabric Four:

- Two (7 1/2" x 6") rectangles
- One (2" x 5") strip

Fabric Five:

- Two (7 1/2" x 6") rectangles

Fusible Foam:

- Two (22 1/2" x 21") rectangles

Fusible Wadding:

- Two (7 1/2" x 6") rectangles
- Two (1 1/2" x 28 1/2") strips (optional handles)

To Stitch the Outer Bag:

1. Take the two (22 1/2" x 5") fabric two strips and stitch each to the bottom of a (22 1/2" x 16 1/2") fabric one rectangle. Press seams towards the 5in strips.

2. Following the manufacturers' instructions iron the fusible foam to the reverse of each of the units completed in step 1.
3. Place the two outer bag sections together, right side facing and stitch around three sides leaving the top edge open.
4. To shape the base of the outer bag, on each corner match the base seam line with the side seam. Measure in 2" from the end corner of the seam line, draw a line across from edge to edge. Stitch. Cut off the excess fabric, trimming the seam to ¼".
5. To add the bag feet, measure in 1" from each corner and carefully make a small hole with a seam ripper. Press each metal foot from the right side of the fabric through the base of the bag and open the teeth out. Repeat for all four corners. Turn bag right side out.

To Stitch the Pouch Strap and Lining:

6. To stitch the pouch strap take the (20" x 2") fabric three strip and press under ¼" on each long edge. Fold in half so that the right side of the fabric is facing out and top stitch down the folded edge.
7. Insert the strap into the D ring part of the swivel bolt snap and fold in half, making sure that the raw edges are even. Stitch across the fabric ¼" away from the D ring.
8. Place the (22 ½" x 20 ½") fabric three lining sections together right side facing. Place the raw ends of the strap between the two lining pieces on one side, 4" down from the top so that the strap is inside the lining and stitch around three sides leaving the top edge open and also a 5" opening in one of the 20 ½" sides.
9. To shape the base of the lining follow the instructions in step 4.
10. To insert the magnetic snap to the lining, find the centre of each inside top edge, measure down 1" and mark the point with a dot on the reverse of the fabric. Iron the 1" squares of interfacing to the wrong side of the lining over the marked dots. Make two small holes for the prongs of the magnetic snap, either side of the marked dot. Inset the prongs through the holes on the right side of the lining, add the back plates and open the prongs so that they lie flat.

To Stitch the Fabric Handles (Optional):

11. If you wish to add fabric handles take the two (4" x 28 ½") fabric one strips and press under ¼" on one long edge of each. Lay a 1 ½" fusible wadding strip down the centre of the wrong side of each handle and iron in place. Fold the raw edge of the fabric to the centre of the wadding and then the folded edge on top. The folded edge should overlap the raw edge by ¼". Pin in place and topstitch along the folded edge.
12. Match the raw ends of each handle with the raw edge of the outer bag, positioning the handles 6" in from each side. Stitch in place with a ⅛" seam.

To Stitch the Bag Together:

13. Place the outer bag inside the lining so that the right sides of the fabric are facing. Matching the side seams stitch around the top edge of the bag. Turn through the opening and stitch the lining closed.
14. Carefully press the top of the bag so that the lining matches the top edge of the outer bag and top stitch around the edge.
15. To insert the metal eyelets follow the manufacturers' instructions inserting an eyelet 6" away from each outer edge and 1 ¼" from the top edge of the bag.
16. To add the rope handles cut the rope into two 32" lengths and insert a raw end into each eyelet. Tie the rope firmly into a knot to secure. You may want to put a dab of glue onto each rope end to stop fraying.

To Stitch the Pouch:

17. Iron the fusible wadding to the wrong side of the (7 ½" x 6") fabric four rectangles.
18. Quilt diagonal lines 1 ½" apart across each outer pouch section.
19. To make the tag take the (2" x 5") fabric four strip press under ¼" on each long edge. Fold in half so that the right side of the fabric is facing out and top stitch down the folded edge. Fold the tag in half so that the raw edges are even and align the raw edges to one outer section, 2" from the top on the 6in side. Stitch with a ⅛" seam.
20. To attach the zip, place the first outer pouch section right side up and place the zip face down on front of it, matching the top edge. Place the lining on top, right side down, and stitch along the top edge to secure the lining, zip and outer pouch.
21. Repeat step 20 to attach the zip to the second pouch section, then open out each panel and press. Stitch ⅛" each side of the zip.

To Stitch the Pouch Together:

22. Open the zip half way and place the two outer pouch sections right side facing and also the lining panels right side facing each other. Pin and stitch all the way around the edge, leaving a 3" opening in the bottom of the lining. Trim corners.
23. Turn the pouch through the opening in the lining and stitch the opening closed.
24. Tie the ribbon to the zip pull.
25. The pouch can now be clipped by the swivel bolt snap through the tag to the inside of the beach bag.



2338/1 Harbour



2341/1 Beach Huts



2345/W Set Beach Huts



2339/Y Icon Scatter



2339/B Icon Scatter



2345/B Set Beach Huts



2343/R Mini Boats



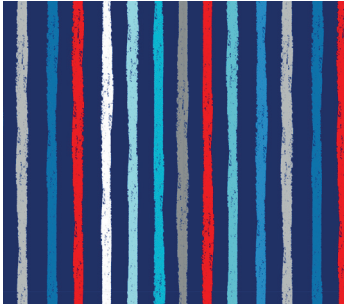
2340 B8 Sailboats



2340 B4 Sailboats



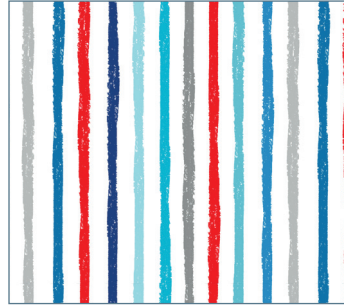
2343/S Mini Boats



2347/BB Chalky Stripe



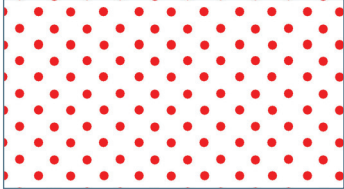
2342/W Anchors



2347/WB Chalky Stripe



2342/B Anchors



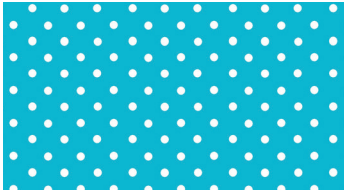
830/WR Spot New



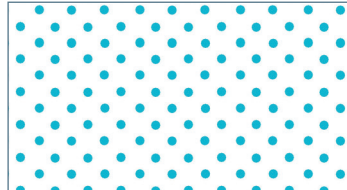
830/R Spot



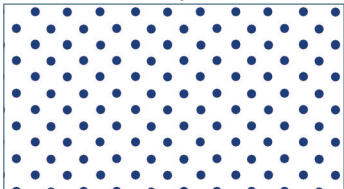
2344/1 Clouds



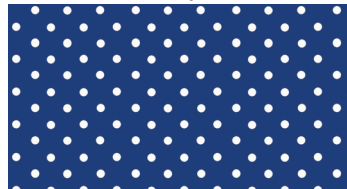
830/T5 Spot New



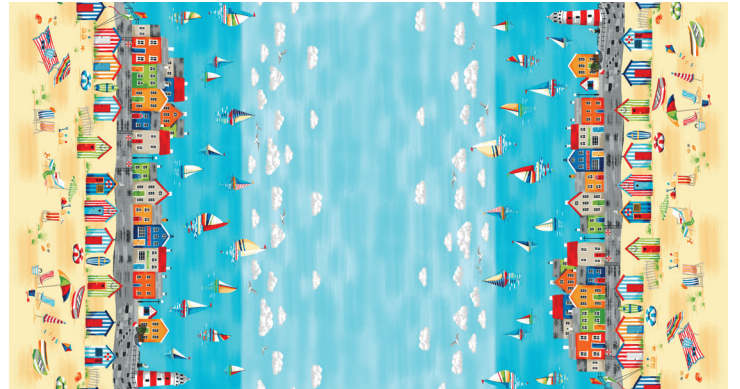
830/WT Spot New



830/WB9 Spot New



830/B9 Spot New



2346/1 Double Border
Each panel 60 x112cms (24" x 44")