

Tilda®



Easter Bunnies



Easter Bunnies

These sweet bunnies make cute gifts at any time of year. We chose certain fabrics, with details given in the instructions, but you can easily replace these fabrics with others from the Tilda ranges. The fabric amounts given are enough for two bunnies.

Materials

- Fabric 1: 14in x 11in (35cm x 27cm) – Tiny Dots light blue (130047)
- Fabric 2: 14in x 11in (35cm x 27cm) – Tiny Star light blue (130038)
- Fabric 3: 11in x 6in (27cm x 15cm) – Nancy yellow (100150)
- Fabric 4: 11in x 6in (27cm x 15cm) – Bonnie mustard (100149)
- Embroidery thread in pale pink (DMC stranded cotton (3727), 20in (50cm)
- Fibrefill 2oz (50g) for stuffing
- Matching thread and a long sewing needle for hand sewing
- Flower stick or chopstick for turning and stuffing
- Thick paper for copying patterns
- Black hobby paint and a metal pin with small head for eyes
- Lipstick or rouge and a dry brush for rosy cheeks

Finished Size

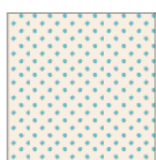
Approximately 11½in (29cm) tall

Making a Bunny

1 Refer to the bullet points below on making the project before you start. Copy all the pattern pieces onto thick paper and cut out the shapes. The fabrics used are shown in **Fig A** – Fabrics 1 and 3 for one bunny and Fabrics 2 and 4 for the other bunny.

- Read all the project instructions through before you start.
- Use thick paper for copying patterns.
- The outer line on a pattern is the sewing line (generally, no seam allowances are included).
- When sewing the seams, reduce your stitch length to 1.5mm–1.6mm.
- Unless otherwise instructed, sew on the outer line of the pattern and then cut out the shapes *after* sewing, cutting ¼in–¼in (3mm–6mm) outside the sewn line.
- To get a good shape, cut snips in the seam allowance where seams curve tightly inwards.
- Stuff well, using a stick to fill small areas.
- Sew up gaps with matching thread and small slipstitches.

Fig A



Fabric 1
Tiny Dots
light blue
(130047)



Fabric 3
Nancy
yellow
(100150)



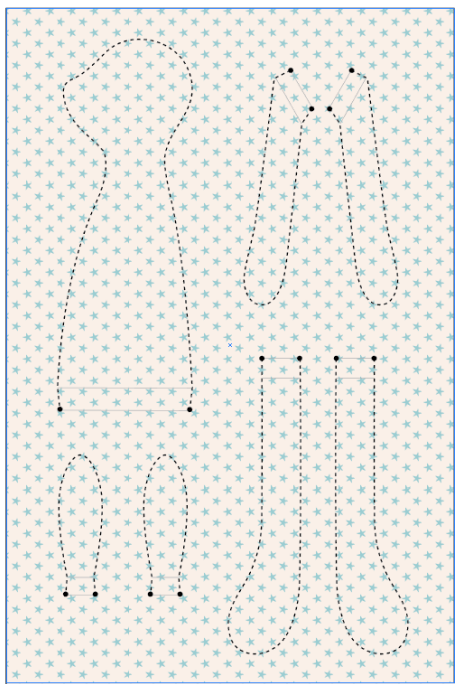
Fabric 2
Tiny Star
light blue
(130038)



Fabric 4
Bonnie
mustard
(100149)

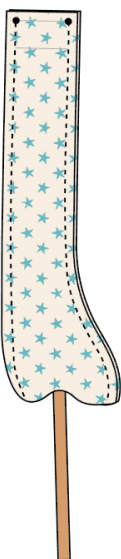
2 Body: Fold Fabric 1 (or Fabric 2) in half across the width, right sides together and iron. Trace one body, two arms, two legs and two ears and sew as shown on **Fig B**. Cut out the pieces – because they are so small cut a smaller seam allowance than normal, about $\frac{1}{8}$ in– $\frac{3}{16}$ in (3mm–4mm).

Fig B



3 Use a thin wooden stick to turn the pieces, such as a flower stick or barbecue stick. Press the flat end of the stick against the closed end of the sewn piece and push the fabric through (**Fig C**).

Fig C



4 Fold in the seam allowance around all the openings, except for on the legs, and press all the pieces. Stuff all the pieces, except for the ears, using the flat end of a wooden stick (**Fig D**).

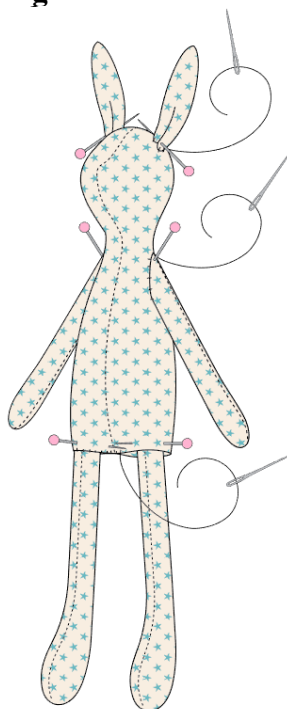
Fig D



5 Place the seam allowance on each leg inside the opening on the body and secure with pins (**Fig E**). Sew the opening closed at the same time as you fasten the legs in place. Fasten the arms in place with pins and sew them on.

6 Fold the ears at the base a little to create a small tuck. Now fix the ears to the head with pins and then sew them onto the head (**Fig E**).

Fig E



7 Dress: Fold Fabric 3 (or Fabric 4) for the dress in half across the width, right sides together. Trace the dress pattern onto the fabric and mark the triangles on each side. Sew from the bottom of the triangles, down to the end of the extra seam allowance (ES). Cut out the dress with a seam allowance around the sides and top (**Fig F**).

Fig F



8 Fold up the extra seam allowance around the bottom opening, press and then sew around the edge. Fold in and press the triangles on each side – in the front and back of the dress (**Fig G**). Now fold and press down the seam allowance along the top edge, in the front and back (**Fig H**).

Fig G



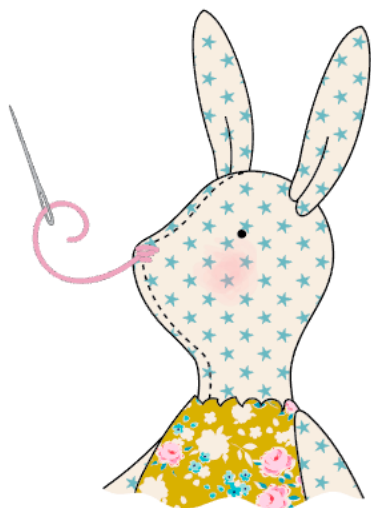
Fig H



9 Hand stitch along the top edge of the dress on one side and continue onto the next side with the same thread (**Fig I**). Put the dress onto the bunny and pull up the thread to create gathers around the neck. Sew together the two edges that are still open.

Fig I**Finishing Off**

10 Sew a small snout with the embroidery thread – three or four satin stitches are enough. Stamp eyes onto the face using a metal pin with a small head, dipped in black hobby paint (**Fig J**). When the eyes are dry, create rosy cheeks using lipstick or rouge and a dry brush.

Fig J

Pattern Easter Bunnies

Make sure to print at 100%

