

Tilda®

Dapper Dachshunds



Dapper Dachs

These little dogs are so adorable that you are sure to want to make lots of them. We chose certain fabrics, with details given in the instructions, but you can easily replace these fabrics with others from the Tilda ranges. The fabric amounts given are enough for one dachshund.

Materials

- Fabric 1: width of fabric x 11in (27cm) – Shirly teal (100151)
- Fabric 2: 21¼in x 11in (54cm x 27cm) – Tiny Star pink (130037)
- Embroidery thread in medium pink (DMC stranded cotton 961), 1 yard (1 metre)
- Fibrefill 5oz (150g) for stuffing
- Matching thread and a long sewing needle for hand sewing
- Flower stick or chopstick for turning and stuffing
- Thick paper for copying patterns
- Black hobby paint and a big-headed metal pin for eyes

Finished Size

Approximately 16½in (42cm) long

Making the Dachshund

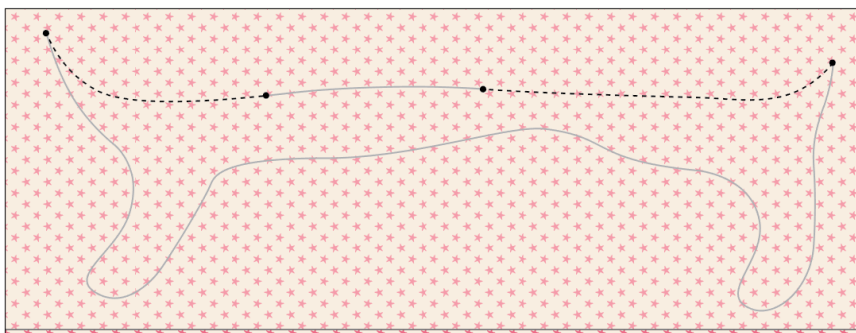
1 Refer to the bullet points below on making the project before you start. Copy all the pattern pieces onto thick paper and cut out the shapes. Read all the project instructions through before you start.

- Use thick paper for copying patterns.
- The outer line on a pattern is the sewing line (generally, no seam allowances are included).
- When sewing the seams, reduce your stitch length to 1.5mm–1.6mm.
- Unless otherwise instructed, sew on the outer line of the pattern and then cut out the shapes *after* sewing, cutting ⅛in–¼in (3mm–6mm) outside the sewn line.
- To get a good shape, cut snips in the seam allowance where seams curve tightly inwards.
- Stuff well, using a stick to fill small areas.
- Sew up gaps with matching thread and small slipstitches.

2 Body: From Fabric 1 cut a 36in x 11in (90cm x 27cm) piece for the top of the dog's body. Fold it in half, right sides together, and press. It should be approximately 17¾in (45cm) wide. Trace the body pattern onto the fabric and then cut it out with a ¼in (6mm) seam allowance all round. You will have two mirrored body parts.

3 From Fabric 2 cut a 14in x 11in (35cm x 27cm) piece for the underside of the dog. Fold the fabric in half, right sides together, and press. It should be approximately 5½in (13.5cm) high. Trace the pattern for the underside onto the fabric. Sew along the top, as shown in **Fig A**, leaving an opening for turning in the seam. While the fabric is still folded, cut out the piece for the underside with a ¼in (6mm) seam allowance all round.

Fig A



4 Unfold this underside piece so it is a single layer and press the seam. Take one body part and pin it on one side of the underside, making sure the legs line up and the pieces are right sides together. Sew along the legs as shown on **Fig B**. In the same way, sew the other body part onto the other side of the underside.

Fig B



5 Now line up the body parts and sew around the rest of the dog, as in **Fig C**.

Fig C



6 Fold the notch on the top of the head to the opposite side, so that the seams meet and then sew across the head. This will give the head some volume (**Fig D**). Trim the seam allowance and cut a few notches in places on the dog where the seams curve inwards.

Fig D

7 Turn the dog to the right side through the opening in the underside and press before stuffing. Stuff the dog well, using a wooden stick or similar tool to fill areas where it is difficult to use your fingers.

8 Ears: Take the remaining piece of Fabric 2, fold it in half right sides together and press. Trace two ears on the fabric and sew all the way around. Cut out the ears with about $\frac{1}{8}$ in (4mm) seam allowance. Carefully cut through one layer of fabric as shown in the pattern, to make openings for turning and then turn the ears using a wooden stick. Press the ears.

9 Tail: Take the remaining piece of Fabric 1, fold it in half right sides together and press. Trace the tail pattern onto the fabric and sew around (**Fig E**). Cut out the tail with a small $\frac{1}{8}$ in (4mm) seam allowance all round and turn with the help of a wooden stick. Fold in the extra seam allowance around the opening and press. Stuff the tail using a wooden stick or similar tool (**Fig F**). Pin the tail onto the dog and then sew it into position.

Fig E**Fig F**

Finishing Off

10 Pin the ears onto the dog and then sew into position – they only need a few stitches along the top (**Fig G**). Make sure the opening slit is turned inward so it can't be seen.

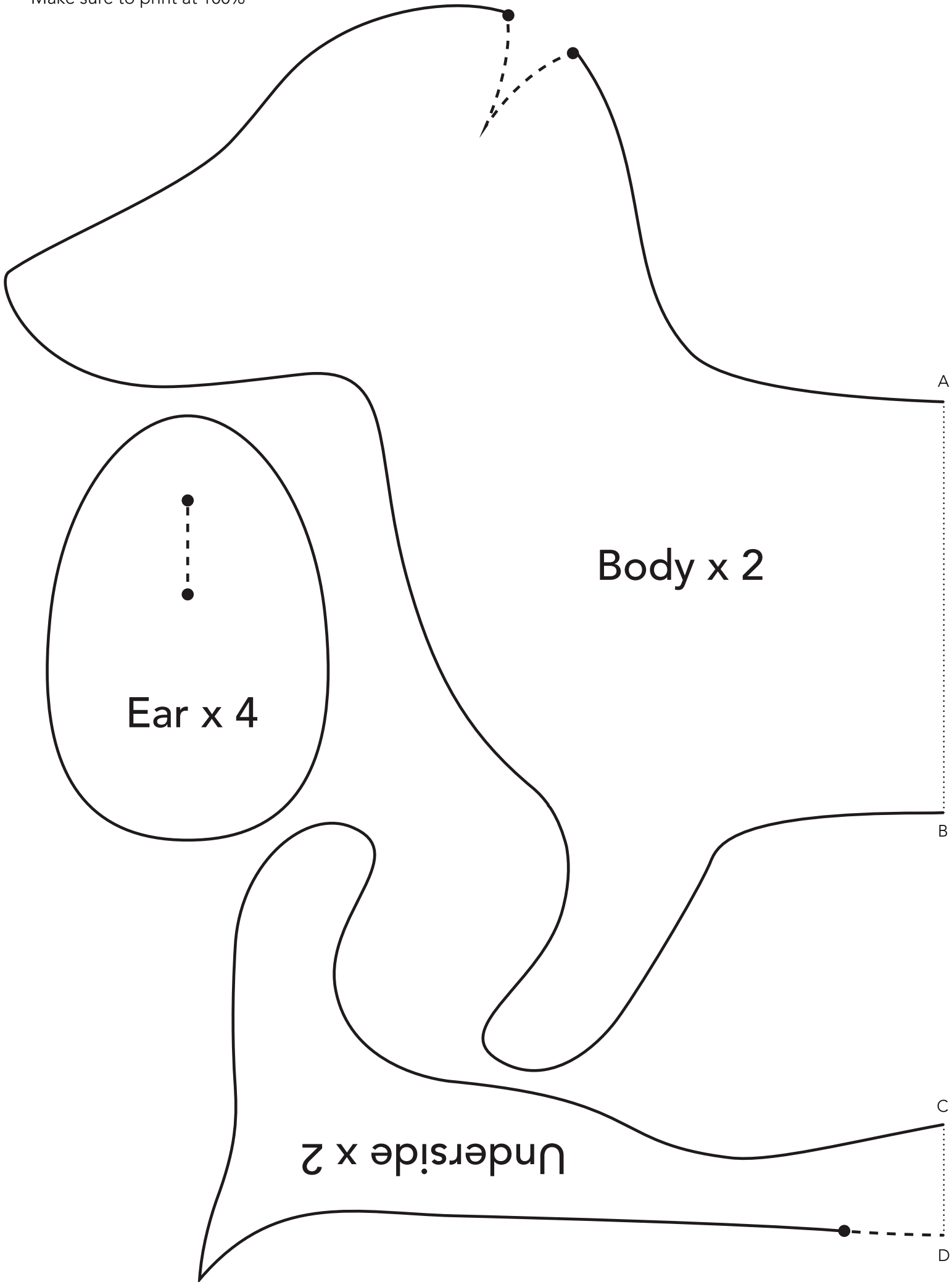
Fig G

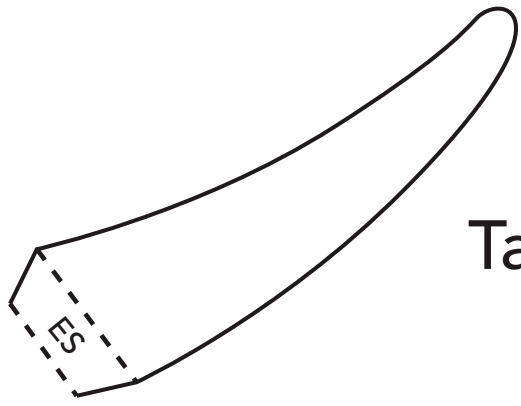


11 Create the eyes by using black hobby paint and a big ball-headed pin about $\frac{3}{8}$ in (1cm) diameter for eyes. To mark where the eyes will be, wiggle the pin back and forth until you have a visible hole. Dip the head of the pin in paint and then stamp eyes on the dog. You could also find something else to use as a stamp or draw circles and paint on eyes with a thin brush. To finish, sew the snout using the embroidery yarn and satin stitch.

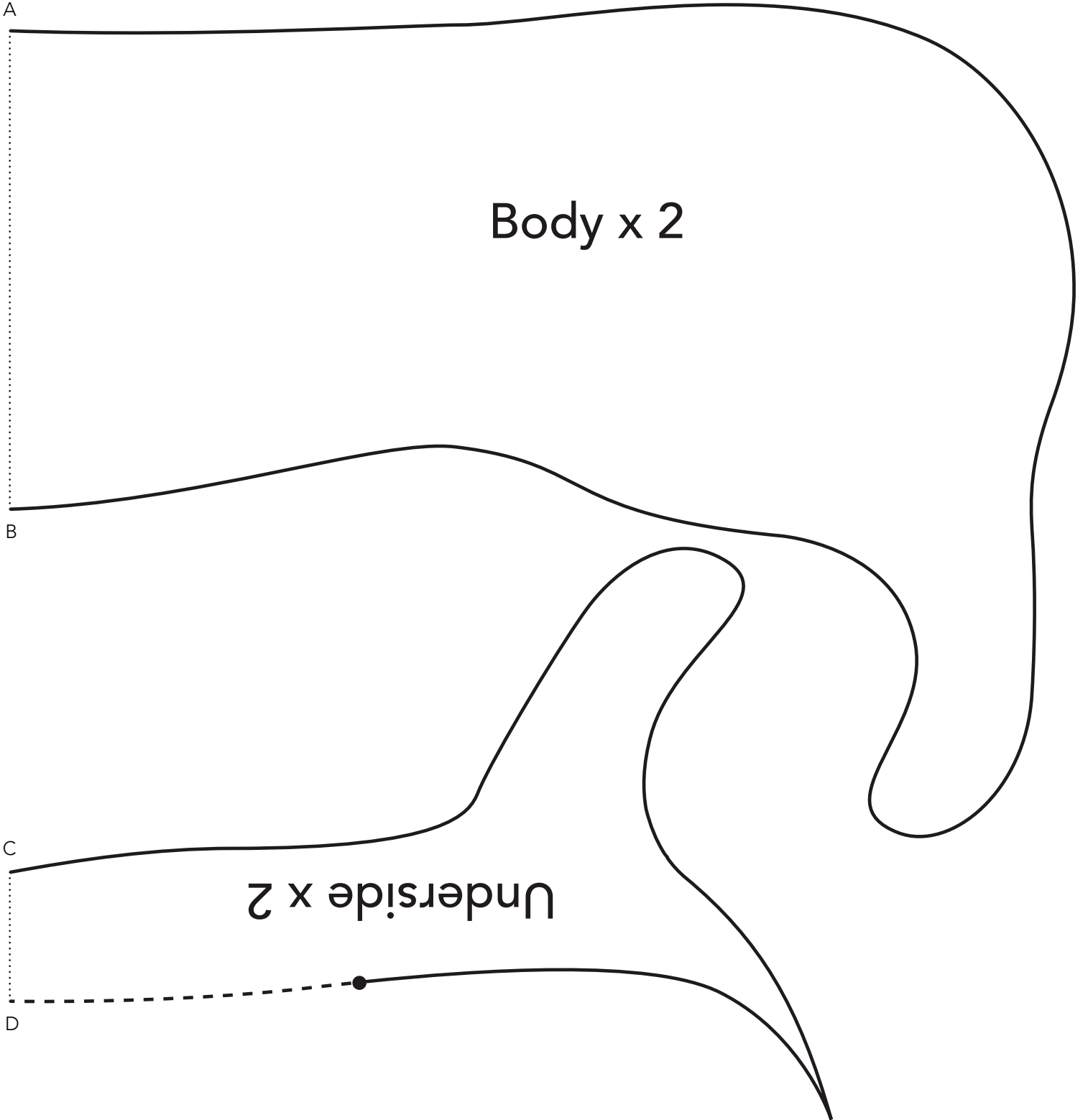
Pattern Dapper Dachshunds

Make sure to print at 100%





Tail x 2



Body x 2

Underside x 2

A

B

C

D